

# M860 MULCHER



## APPLICATION VERSATILITY.

The Weiler 825 mulcher comes installed from the factory and is optimized for the M860. Rugged structures, reinforced skirts, and internal abrasion-resistant plating minimize downtime and repairs. All daily service points are at ground level.



## OPERATOR COMFORT.

A quiet and spacious cab with a powerful HVAC system and rear view camera keep operators comfortable and productive. The premium seat, wide leg room near the joystick mounts, and overall machine balance provide a superior ride.



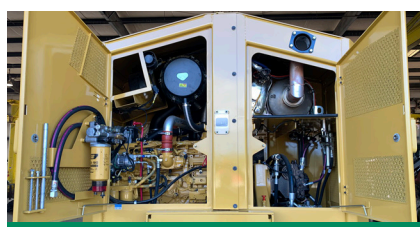
## WORK ZONE VISIBILITY.

A clean three-piece front windshield and sleek hose routings allow the operator to see the work zone easily without having to strain or reposition the machine. This minimizes operator fatigue and leads to more productivity.



## SERVICEABILITY.

Ground level fuel fill, electric hydraulic oil fill pump, four-sided access to the engine and hydraulic pumps, as well as a tilting cab provide full access to the interior of the machine delivering excellent serviceability.



## PRESSURIZED COMPARTMENTS.

The machine is segmented into separate compartments that are pressurized to prevent debris from entering the machine. Perforated panels keep the machine components at cooler temperatures longer and along with heavy duty steel hinged belly pans reduce cleaning time.



## GREATER DURABILITY & RELIABILITY.

Rugged frames with integrated steering cylinder mounts and a center hitch field-proven for nearly 20 years are built for the harshest applications. The large cooling system keeps the engine and hydraulics cool, extending component life.

# M860 SPECIFICATIONS

<b>Engine Model</b>	Cat® C9.3B Tier 4 Final	<b>Hydraulic Tank Capacity</b>	43.0 gal    163 L	<b>Travel Speed (low)</b>	0-5.2 mph    0-8.4 km/h
<b>Gross Power</b>	375 hp    280 kW	<b>Wheelbase</b>	125.0"    3175 mm	<b>Travel Speed (high)</b>	0-12.3 mph    0-19.8 km/h
<b>Engine Speed</b>	1880 rpm	<b>Ground Clearance</b>	24.7"    627 mm	<b>Cutting Path - 825</b>	8' 4"    2.54 m
<b>Weight</b>	38,450 lb    17 440 kg	<b>Transport Width</b>	9' 11"    3.03 m	<b>Max Single Cut Diameter - 825</b>	16.0"    406 mm
<b>Fuel Capacity</b>	130.5 gal    494 L	<b>Transport Height</b>	11' 3"    3.43 m	<b>Max Mulching Diameter - 825</b>	16.0"    406 mm
<b>DEF Capacity</b>	11.8 gal    44.7 L	<b>Transport Length</b>	29' 11"    9.12 m		

Base configuration includes 30.5L-32 26PR tires, winch ready, and 825 mulching head. Weight: deduct 1,720 lb (780 kg) for 28L-26 tires and 0 lb (0 kg) for 67-34 tires. Height and ground clearance deduct: 4.0" (10.2 cm) for 28L-26 tires and 3.0" (7.6 cm) for 67-34 tires.

## POWERTRAIN

- Cat C9.3B engine certified to EPA Tier 4 Final
- Primary and secondary fuel filters, including water separator
- Electric fuel priming pump
- Electric fuel transfer pump
- Centrifugal engine air pre-cleaner
- 2-Stage engine air cleaner
- Cross-flow cooling system with side by side cores
- Swing out air conditioner condenser
- Hydraulically driven, on demand reversing cooling fan
- Electronically driven, reversing pressurizing fan
- 2-Speed hydrostatic ground drive
- Momentary front axle differential lock
- On/off rear differential lock
- Heavy-duty driveshafts
- Lubed for life universal joints and greasable center driveshaft joint
- Spring applied, hydraulically released parking brake

## OPERATOR ENVIRONMENT

- Enclosed OPS/FOPS/ROPS certified cab
- Reverse slope 3-piece windshield
- High capacity HVAC system
- Pressurized water tank
- Air suspension seat with harness seat belt
- Joystick steering controls
- Weiler programming system
- Adjustable operator controls
- Attachment float control
- Road steer mode
- 6 speed selections
- Terrain selection mode
- AM/FM/Bluetooth Radio
- Backup camera with 10" screen
- 24V to 12V converter and two 12V power ports

## ELECTRICAL

- 24-volt electrical system with two 12-volt batteries
- Main disconnect switch with Diesel Exhaust Fluid (DEF) purge indicator light
- Display monitor and programmable operator controls
- LED working lights

## SALES AND SERVICE

Sold and serviced exclusively through Weiler Forestry dealers worldwide

[WEILERFORESTRY.COM](http://WEILERFORESTRY.COM)

Materials and specifications are subject to change without notice. Featured machines and photos may include optional equipment. All rights reserved.

## HYDRAULICS

- Weiler software monitors performance and delivers power where needed
- Load-sense hydraulics
- Variable displacement pumps
- Closed loop attachment system with 71 gallons of total oil volume
- 113 gpm (428 lpm) at 6,000 psi (41,369 kPa) attachment pump
- High performance, multi-functioning main control valve
- Two dedicated hydraulic coolers
- Long life, in-tank hydraulic filter
- Electric hydraulic oil fill pump

## OTHER STANDARD EQUIPMENT

- Heavy-duty double walled box section frames
- Rear mounted tow hooks
- Dual tapered roller bearing upper and lower center hitch
- Chrome plated lift arm and tilt pins
- Ecology drains (engine oil, engine coolant, hyd tank, fuel tank, axles)
- Tilt cab
- Under Cab Water Tank
- Pressurized engine, hydraulic, and Clean Emissions Module compartments
- Ground level fuel fill
- Single side engine service
- S-O-S sampling ports

## OPTIONAL EQUIPMENT

- Retrieval Assist Winch
- Strobe, Turn Signals & Brake Lighting
- Water Tank Fill w/RV Antifreeze Mix
- CB Radio
- Product Link™ (PL243 Cellular or PL631 Satellite)
- Fire Extinguisher
- Attachment Quick Coupler Connections
- 28L x 26 Tires - Overall Width 117.0" (2970 mm)
- 30.5L x 32 Tires - Overall Width 119.1" (3025 mm)
- 67 x 34 Tires - Overall Width 128.7" (3270 mm)
- 73 x 44 Tires - Overall Width 147" (3735 mm)
- 825 Mulcher

## WARRANTY

12 months standard, extended warranty available

M860, SS (10-2022)