



### **SIMPLIFIED DRIVETRAIN.**

The simplified, variable-speed hydrostatic drive makes operation simple and efficient. Multiple speed ranges provide excellent power and ground speed for maximum production. Optimal axle ratios provide powerful pulling performance and improved reliability.



### **MACHINE FUNCTIONALITY.**

Strong multi-functioning hydraulics improve productivity allowing operators to steer and operate other functions simultaneously. The limited slip front axle and rear differential lock improves traction without impacting maneuverability allowing optimal operation even in wet conditions.



### **BEST-IN-CLASS VISIBILITY.**

The large front glass and sloped narrow hood provide excellent front visibility to the blade and allow increased visibility to the front of the machine. The unobstructed rear glass gives clear site to the grapple for quicker bundle grabbing and easy maneuverability for placing a loader.



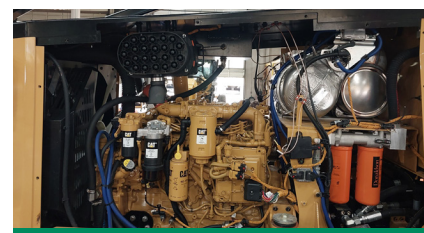
### **SPACIOUS OPERATOR'S CAB.**

The large, spacious cab provides the ultimate in operator comfort and features simple and easy-to-use controls. Weiler programming allows joystick button mapping for multiple control patterns. Joystick steering with front foot controls is standard, and an optional mechanical rotating seat with rear foot controls.



### **OPERATOR ACCESS.**

Wide steps on both sides of the machine and 90 degree door openings make it easy for operators to enter and exit the cab. The DEF tank and cab tilt pump are located in the LH saddle bag for ground level access. The RH saddle bag houses the batteries and the hydraulic fill pump for additional ground level accessibility.



### **SIMPLE, CLEAN DESIGN.**

Fifty percent less hoses across the center section and a front mounted cooling system with optional reversing fan deliver improved reliability and lower O & O costs. Easy engine and chassis access for best-in-class serviceability. Dual tapered roller bearing hitch pins, thicker panels, and solid steps deliver improved structural life.

# S240 SPECIFICATIONS

<b>ENGINE MODEL</b>	Cat® C7.1 Stage 5	<b>WHEELBASE</b>	144" 3652 mm	<b>GROUND CLEARANCE</b>	23.6" 599 mm
<b>GROSS POWER</b>	203 hp 151 kW	<b>WEIGHT</b>	41,000 lb 18 597 kg	<b>BOX GRAPPLE TONG CAPACITY</b>	14.4 ft² 1.34 m²
<b>ENGINE SPEED</b>	2200 rpm	<b>TRANSPORT WIDTH</b>	10' 7" 3.21 m	<b>BOX GRAPPLE TONG OPENING</b>	126.2" 3205 mm
<b>FUEL CAPACITY</b>	83.2 gal 315 L	<b>TRANSPORT HEIGHT</b>	11' 1" 3.39 m	<b>BLADE GRAPPLE TONG CAPACITY</b>	15.7 ft² 1.46 m²
<b>DEF CAPACITY</b>	5.0 gal 19 L	<b>TRANSPORT LENGTH</b>	27' 4" 8.32 m	<b>BLADE GRAPPLE TONG OPENING</b>	136.3" 3462 mm

Base configuration includes 30.5L-32 26PR NOAW Tires, Fenders, Winch, Water Tank, Box Grapple, and Blade. Weight add 545 lb (247 kg) 30.5L-32 2X Ring tires, 1,508 lb (684 kg) for 35.5L-32 tires. Height and ground clearance add 2.4" (61 mm) for 35.5L-32 tires.

## POWERTRAIN

- Cat C7.1 single turbo engine certified to EPA Stage 5
- Primary and secondary fuel filters, including water separator
- Electric fuel priming pump
- Electric fuel transfer pump
- Integrated engine pre-cleaner with 2-stage filter
- Front mounted cooling package
- Engine driven fan
- Variable-speed hydrostatic ground drive
- HD axles, approved for dual tires up to 30.5L-32 with 24.5L-32 outer tires and single wide tires up to 73x44 with chains
- Rear only differential lock with limited slip front axle
- Lubed for life universal joints and HD drive shafts
- Enclosed disc service brakes on front axle only
- Enclosed parking brake - spring applied, hydraulically released

## OPERATOR ENVIRONMENT

- Wide, enclosed cab
- Joystick steering with front foot controls
- High capacity HVAC system
- Air suspension seat with 4 point harness seat belt
- AM/FM/Bluetooth Radio
- 24V to 12V converter, 12V power port, and 2xUSB ports
- 4 LED cab lights
- Weiler machine software

## HYDRAULICS

- Load-sense hydraulics
- Variable displacement pumps
- High performance, multi-functioning main control valve
- Spin on filters

## ELECTRICAL

- 115 ampere alternator
- 24-volt electrical system with 2 x 12-volt batteries
- Main disconnect switch with Diesel Exhaust Fluid (DEF) purge indicator light
- Product Link™ Ready

## SALES AND SERVICE

Sold and serviced exclusively through Weiler Forestry dealers worldwide.

## OTHER STANDARD EQUIPMENT

- Heavy-duty frames
- Narrow engine enclosure with high front visibility
- Single side engine service
- Dual tapered roller bearing upper and lower center hitch
- Heavy-duty limb risers
- Wide water tank ready decking blade with welded on cutting edge
- Tilt Cab
- Hand pump for hydraulic oil fill

## OPTIONAL EQUIPMENT

- Dual Function Arch/Boom and Grapple Head
- Cable Arch w/ High Speed Winch and Extreme Duty Fenders
- 14.4 ft² HD Box Tong or 15.7 ft² Blade Tong Grapples
- No Winch, Winch Ready, Standard Winch, or High-Speed Winch
- Grapple Fenders
- Weighted Decking Blade
- Standard or Weighted Decking Blade w/ Bolt-on Cutting Edges
- Front Axle w/ Locking Differential
- Wheel Steering
- High Rotation Joystick Seat w/ Added Rear Foot Controls
- High Intensity Cab Mounted Light Bars w/ Additional Optional 3 Boom Lights
- Pressurized Blade Mounted Water Tank
- CB Radio
- Hydraulic Reversing Fan
- Product Link™ (PL243 Cellular or PL631 Satellite)
- Ether Starting Aid
- Electric Hydraulic Oil Fill Pump
- 7/8" x 75' Winch Cable w/ 7 Ton Hook
- 5 LB Fire Extinguisher
- Water Tank Fill w/ RV Antifreeze
- 30.5L-32 NOAW Tires - 126.6" (3220 mm)
- 30.5L-32 Tires - 133.3" (3390 mm), Approved for Chains
- 30.5L-32 2X Ring Tires - 126.6" (3220 mm)
- 35.5L-32 NOAW Tires - 139.1" (3530 mm)
- 35.5L-32 2X Ring Tires - 139.1" (3530 mm)
- 35.5L-32 Tires - 145.8" (3700 mm), Approved for Chains
- 73x44-32 Tires - 158" (4000 mm)
- 30.5 or 35.5 Tubes (Set of 4)

## WARRANTY

12 months standard. Extended warranty available.

